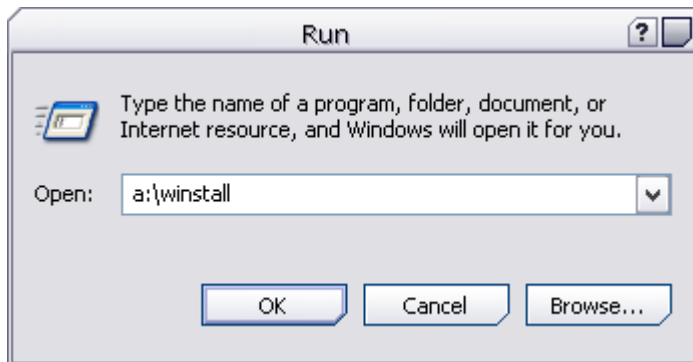


# Genesis Traffic Manager

## Quick Install Instructions

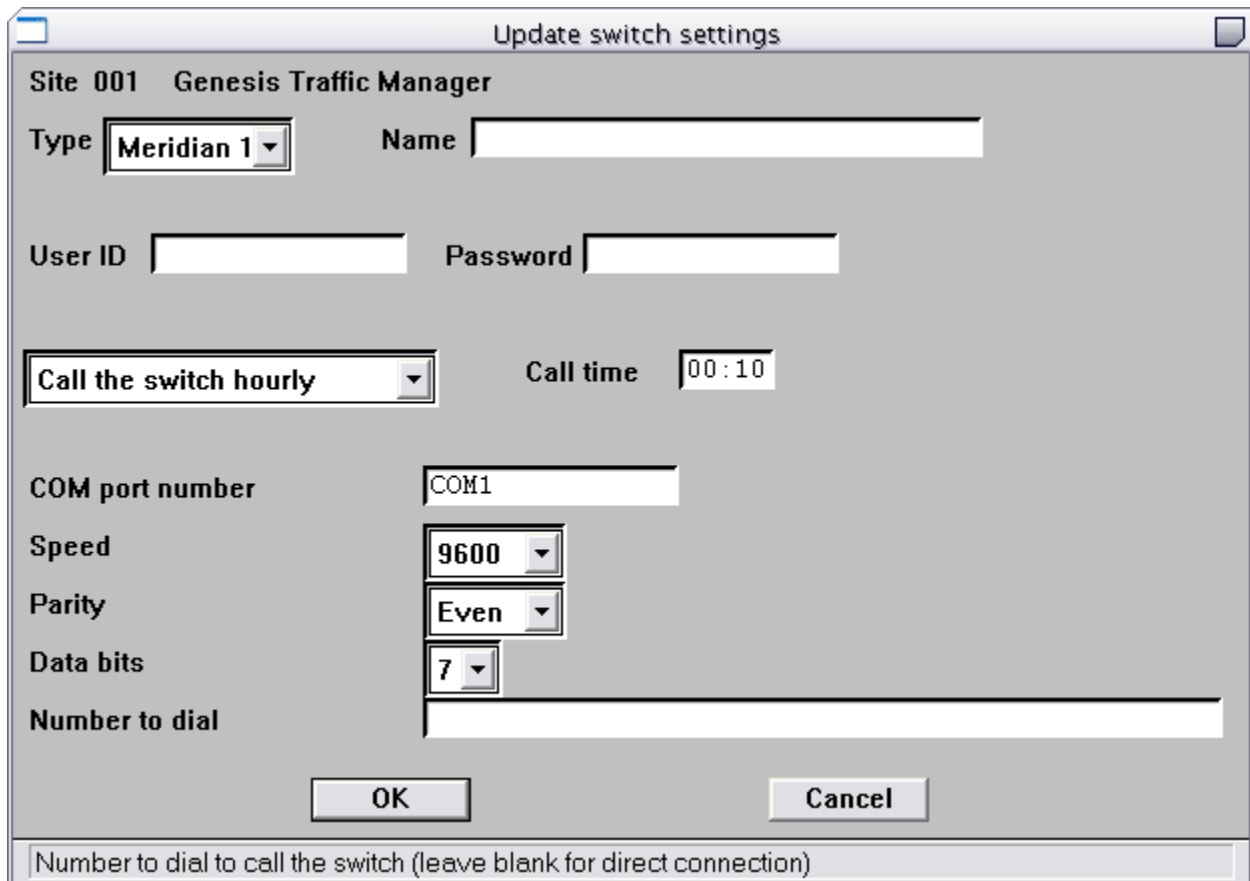
- **Installing the Software**
- **Configuring Switch Settings**
- **Completing the Installation**
- **Running Genesis Traffic Manager**
- **System Overview**
  - **File Menu**
  - **Reports Menu**
  - **Month-end Menu**
  - **Upgrades Menu**
  - **Backup Menu**
  - **Events Menu**
  - **Diagnostics Menu**

## Installing the Software



Click **Start » Run** and enter **A:\WINSTALL** (where A is the letter of your floppy drive) Insert the remaining installation disks (if any) when prompted to do so.

## Configuring Switch Settings

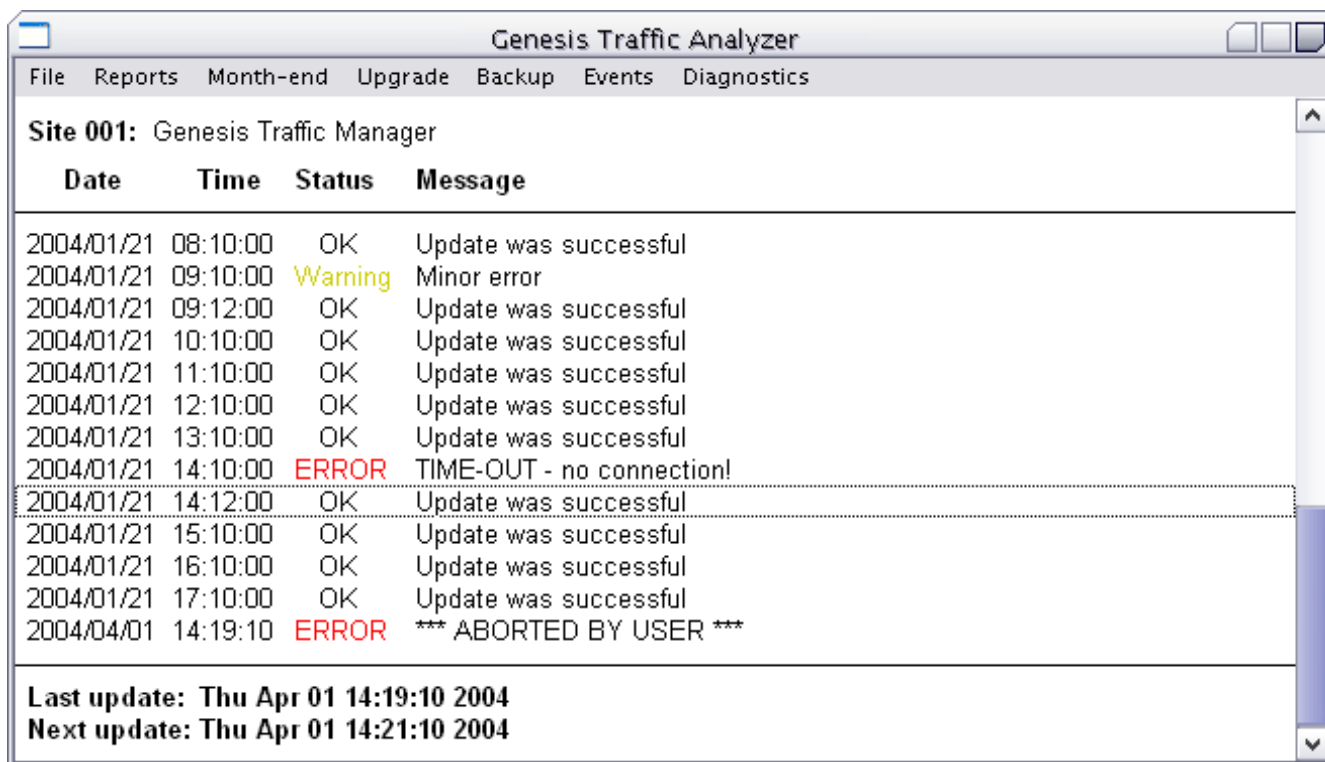


After you are prompted for the last installation disk, the above screen will be displayed automatically. In this screen be sure to specify the communication parameters that **Genesis Traffic Manager** should use for retrieving data from your telephone switch via the SDI port. Helpful information is displayed along the bottom bar of the program.

## Completing the Installation

After you have specified the switch settings click OK. The install program will then launch the **Genesis Traffic Collector** program, which will attempt to retrieve traffic statistics from your telephone switch immediately. You will also be alerted that installation is complete. It is now safe to remove the last disk from your floppy drive.

## Running Genesis Traffic Manager



The screenshot shows the 'Genesis Traffic Analyzer' application window. The title bar includes the application name and standard window controls. The menu bar contains 'File', 'Reports', 'Month-end', 'Upgrade', 'Backup', 'Events', and 'Diagnostics'. The main content area displays 'Site 001: Genesis Traffic Manager' and a table of log entries. The table has four columns: 'Date', 'Time', 'Status', and 'Message'. The entries show a series of successful updates, a warning, and an error. At the bottom, it shows the last and next update times.

Date	Time	Status	Message
2004/01/21	08:10:00	OK	Update was successful
2004/01/21	09:10:00	Warning	Minor error
2004/01/21	09:12:00	OK	Update was successful
2004/01/21	10:10:00	OK	Update was successful
2004/01/21	11:10:00	OK	Update was successful
2004/01/21	12:10:00	OK	Update was successful
2004/01/21	13:10:00	OK	Update was successful
2004/01/21	14:10:00	ERROR	TIME-OUT - no connection!
2004/01/21	14:12:00	OK	Update was successful
2004/01/21	15:10:00	OK	Update was successful
2004/01/21	16:10:00	OK	Update was successful
2004/01/21	17:10:00	OK	Update was successful
2004/04/01	14:19:10	ERROR	*** ABORTED BY USER ***

**Last update: Thu Apr 01 14:19:10 2004**  
**Next update: Thu Apr 01 14:21:10 2004**

To start the **Genesis Traffic Analyzer** program click on **Start » Programs » Genesis Traffic » Genesis Traffic Analyzer**. When the **Genesis Traffic Collector** program polls the switch for data it will display summary information on the transaction in the main program window. For detailed information on a transaction with the switch, simply double click any entry in this list.

# System Overview

**File Menu** - Here you can configure the switch collection parameters in case you need to make any modifications.

You can also **optionally** specify trunk groups and console groups. If you manually specify these groups you can select a desired statistical model (Poisson, Erlang B, Erlang C) and grade of service, etc. If you do not specify trunk and console groups **Genesis Traffic Manager** will **automatically** use the Erlang B statistical model with a target GOS of 0.010. **Genesis Traffic Manager** also **automatically adds** all the trunk groups listed in your switch after your first data download.

You can also set the study period for all reports to use. The default study period is from 8am to 12pm and 1pm to 5pm, Monday to Friday. If you would like reporting to cover different business hours simply make those modifications in the traffic study period screen.

**Reports Menu** - Through this menu you can run manual reports, configure automatic ones, set up report distribution lists and modify screen and printer fonts. Note that all manual reports you run can be saved as custom reports. Some of the **Genesis Traffic Manager** reports include graphing capabilities. You can double click on items listed in a report for a what-if graph of that report line. All reports can be run to the screen, printer, disk file or emailed to any number of individuals. More specific information on the reporting functionality of your **Genesis Traffic Manager** system is available in the product manual.

**Month-end Menu** - If you would like to change the month-end cycle of your Genesis system you can do so in this menu. Genesis defaults to starting a new month on the first day of each month. All traffic data for previous months is kept. Should you wish to delete previous months' traffic data you can also do that here.

**Upgrades Menu** - If you receive disks via mail from Genesis you will need to install these system updates via this menu. Insert the disk in the floppy drive and continue with the update. Detailed information on installing system updates is sent along with the disks you receive in the mail.

**Backup Menu** - Genesis **strongly recommends** you perform a backup of your system via this menu, once everything is configured and working correctly. Perform the backup on a blank floppy disk and be sure to put it in a safe place. Note this is a backup of Genesis system files only. If you would like to backup your statistical traffic data please contact Genesis for details.

**Events Menu** - If you wish to poll the switch immediately for traffic statistics you can do so via this menu. The switch is automatically polled hourly or at midnight, depending on the switch type. The automatic collection frequency can be modified via the File menu.

**Diagnostics Menu** - This menu is used primarily when you are experiencing technical difficulties with your **Genesis Traffic Manager** system. A Genesis support technician may ask you to perform functions and run diagnostic reports within this menu.